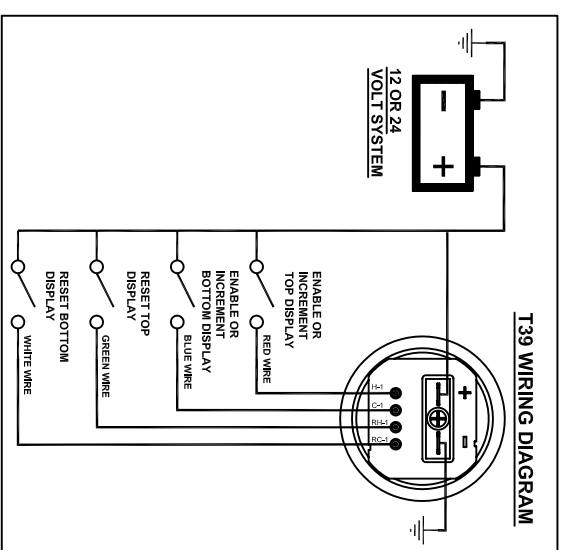
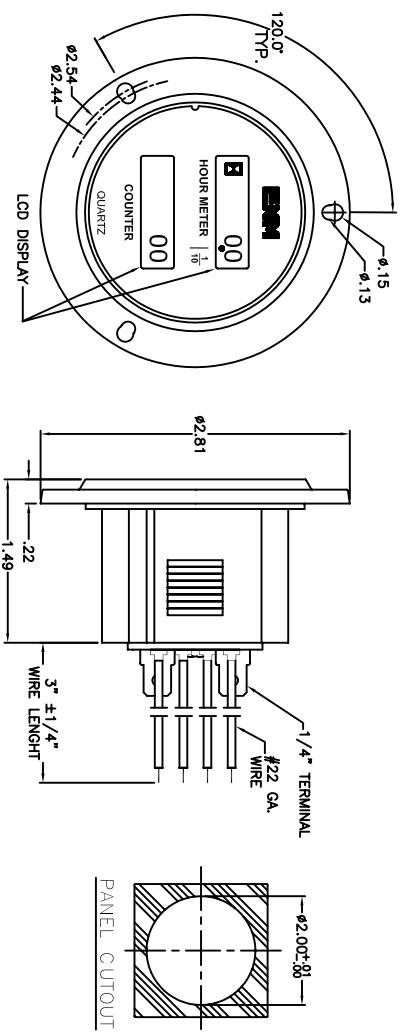
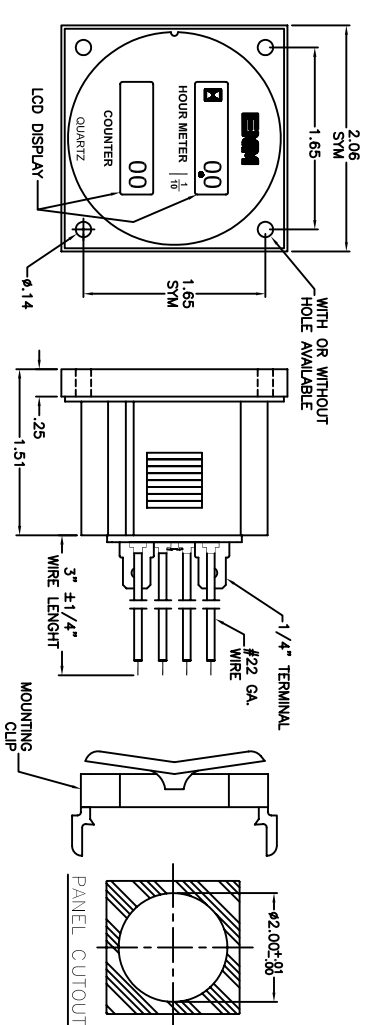
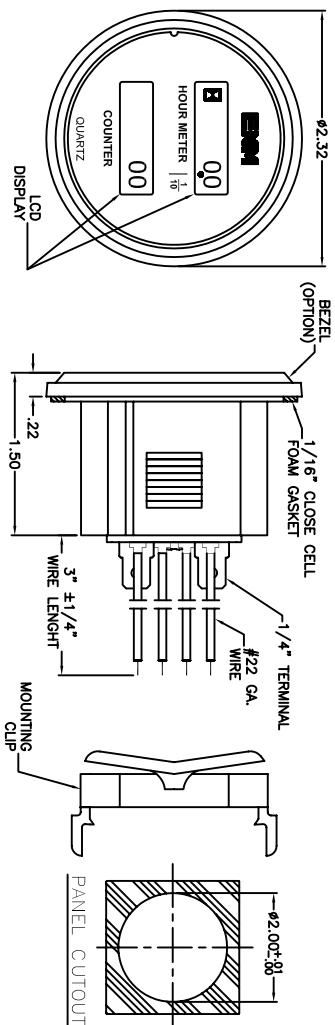


REVISIONS			
SYM	DESCRIPTION	DATE	APPROVAL



**TECHNICAL DATA**

OPERATING: 2 TERMINALS AND 4 WIRE DEVICES  
 RESET INPUT: CUSTOMER OPTION (1 OR 2 OR NON RESET)  
 OPERATING VOLTAGE: MIN. 4.5VDC - MAX. 28VDC  
 OPERATING CURRENT: 6mA MAX. 8 TO 24VDC  
 MAXIMUM COUNT SPEED: 50 C.P.S.  
 OPERATING TEMP. -30°C TO +65°C  
 CASE MATERIAL: AS CYCLIC GRADE KGB (BLACK).

OPERATING SPECIFICATION	
MODELS T39AA T39BA T39EA T39DA	
CONNECT NEGATIVE 1/4" TERMINAL TO BATTERY NEGATIVE.	
CONNECT POSITIVE 1/4" TERMINAL TO BATTERY POSITIVE.	
CONNECT RED WIRE (H-1) TO ENABLE TOP HOUR METER DISPLAY	
CONNECT BLUE WIRE (C-1) TO RESET TOP DISPLAY	
CONNECT GREEN WIRE (H-1) TO INCREMENT BOTTOM HOUR METER DISPLAY	
CONNECT WHITE WIRE (C-1) TO RESET BOTTOM DISPLAY	
OPERATING SPECIFICATION	
MODELS T39AC T39EC T39DC T39BC	
CONNECT NEGATIVE 1/4" TERMINAL TO BATTERY NEGATIVE.	
CONNECT POSITIVE 1/4" TERMINAL TO BATTERY POSITIVE.	
CONNECT RED WIRE (H-1) TO ENABLE TOP HOUR METER DISPLAY	
CONNECT BLUE WIRE (C-1) TO INCREMENT BOTTOM HOUR METER DISPLAY	
CONNECT GREEN WIRE (H-1) TO RESET TOP DISPLAY	
CONNECT WHITE WIRE (C-1) TO RESET BOTTOM DISPLAY	

MATERIAL		FINISH		HEAT TREAT	
DIMENSIONAL TOLERANCES UNLESS OTHERWISE SPECIFIED					
FRAC.	DEC.	ANG.			
±1/64	±.005	±30°			
XX	XX	XX			
F.01					
SCALE	IND. REQ'D				
NEXT ASSY.	DRAWN	CHECKED	DATE	DATE	DATE
	JG	NI	7/22/02	7/22/02	7/22/02
	APPROVED	JG	DATE	7/22/02	
TITLE			T39 SERIES TWO METER COMBO		
MATERIAL					
FINISH					
HEAT TREAT					
WEIGHT					
SIZE			B		
DRAWING NUMBER			S-T39 SERIES		
ISSUE			1		
 Chicago, Illinois					

THIS PRINT IS THE PROPERTY OF ENM COMPANY AND IS LOANED SUBJECT TO RETURN UPON DEMAND. TITLE TO SAME IS NEVER SOLD OR OF DESIGN OR INVENTION ARE RESERVED. PRINT IS NOT NECESSARILY TO SCALE.